

# Flemings



## 288 Cemetery Drive Rye Park NSW

4 1 6

Flemings Boorowa are pleased to present 'Hilltop' 288 Cemetery Drive, Rye Park to the market for sale. Located 1.5km\* from the village of Rye Park, this picturesque property comprises 182.10ha\* (450 acres\*). The meandering tree lined driveway leads you to a scenic bushland setting where you find a lovely four bedroom family home nestled among the hills. With granite soil and native pastures, this property provides the ideal environment for livestock grazing.

### Features:

- 182ha\* (450 acres\*) total land area
- Four bedrooms, all with BIR
- Open plan kitchen/dining with adjacent lounge
- Slow combustion wood heating and two reverse- cycle airconditioners

**Land Size** : 450 Acres

**View** : <https://www.flemingspropertyservices.com/sale/nsw/riverina/rye-park/residential/rural/7575382>

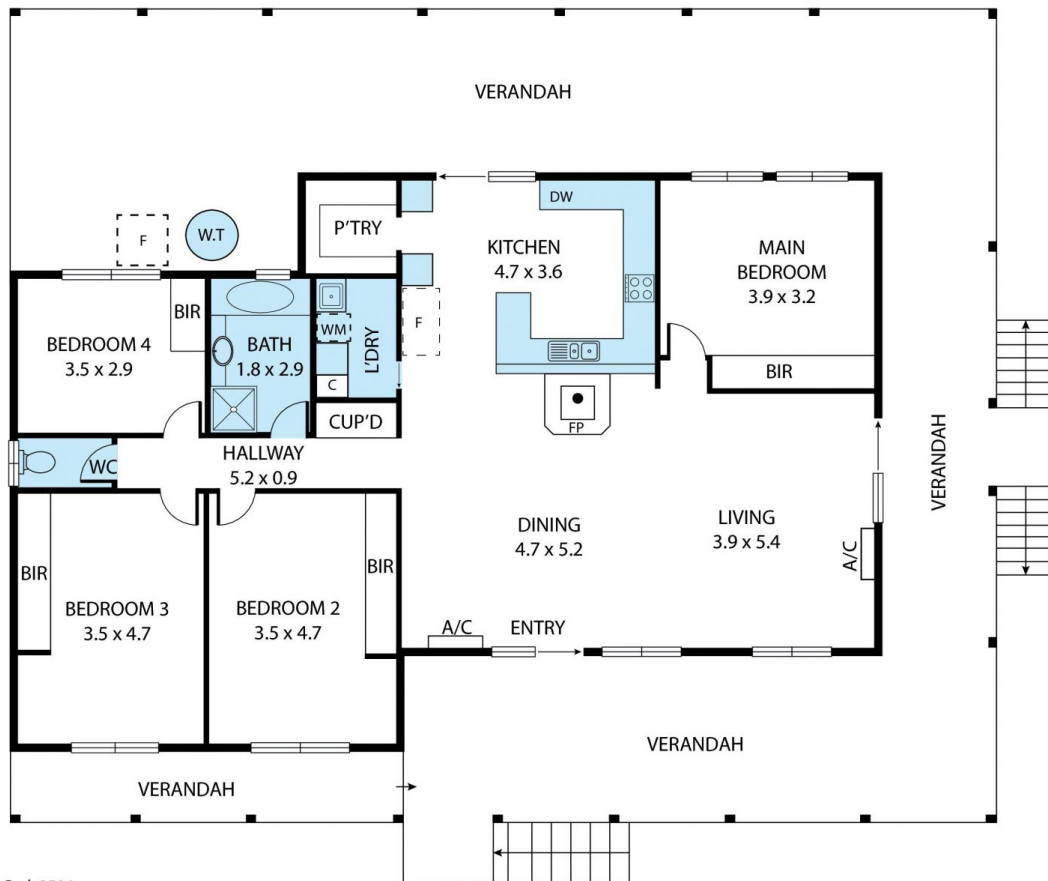


**Justin Fleming**  
02 6385 3337



**Amanda Serafin**  
02 6385 3337

<https://www.flemingspropertyservices.com>



288 Cemetery Drive, Rye Park 2586

TOTAL APPROX. FLOOR AREA 140 SQ.M

Whilst every attempt has been made to ensure the accuracy of the floor plan contained here, measurements of doors, windows, rooms and any other items are approximate and no responsibility is taken for any error, omission, or misstatement. This plan is for illustrative purposes only and should be used as such by any prospective purchaser.

**Flemings**