

Flemings



1432 Fogs Crossing Road Reids Flat NSW

3 1 4

Flemings Boorowa is pleased to present 'Daleview' 1432 Fogs Crossing Road, Reids Flat to the market for sale. Situated on the Lachlan River is 'Daleview'. A picturesque 265ha* (655acre) property, with mountain views and a well established country style, three bedroom sandstone block home.

Land Size : 655 Acres
View : <https://www.flemingspropertyservices.com/sale/nsw/riverina/reids-flat/residential/house/7423849>

Features:

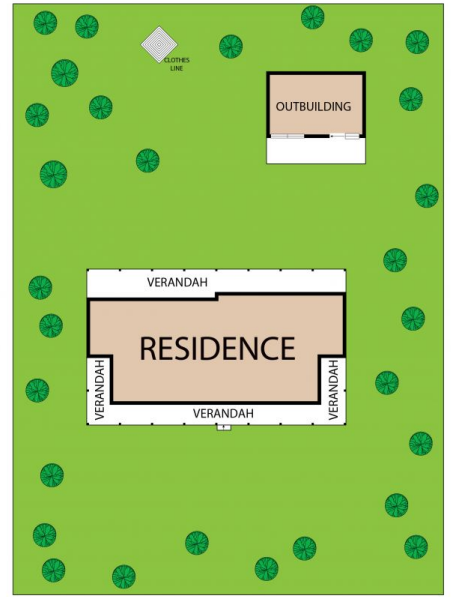
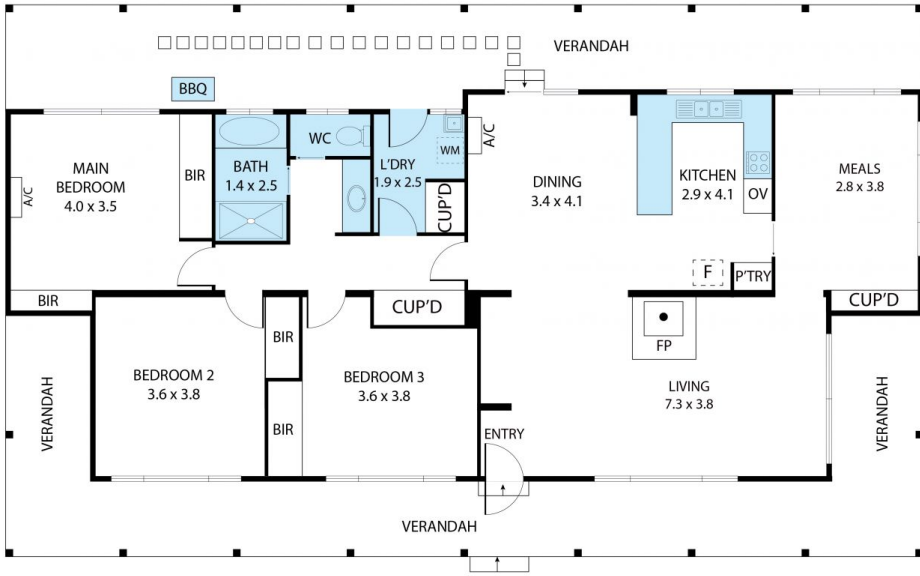
- 265ha* (655acres) Includes 40.46ha* (100acres) of crown land
- 1km of frontage to the beautiful Lachlan River
- Three generous bedrooms all with built-ins
- Slow combustion heating, plus reverse-cycle heating and cooling
- Open-plan kitchen and dining
- Front and rear verandas with spectacular mountain views



Amanda Serafin
02 6385 3337



Justin Fleming
02 6385 3337



1432 Foggs Crossing Road, Bigga 2583

TOTAL APPROX. FLOOR AREA 108 SQ.M

Whilst every attempt has been made to ensure the accuracy of the floor plan contained here, measurements of doors, windows, rooms and any other items are approximate and no responsibility is taken for any error, omission, or misstatement. This plan is for illustrative purposes only and should be used as such by any prospective purchaser.

Flemings