

# Flemings



## 'Fairview' Banks Street Rye Park NSW

4  2  2 

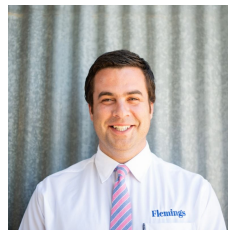
Flemings Boorowa, are pleased to present to the market, 'Fairview' 56 Banks Street, Rye Park.

Consisting of approximately 44 hectares (115 acres) of undulating arable country with approximately 2km of frontage to Pudman Creek, on the edge of Rye Park village.

Very comfortable and well-presented 4-bedroom home with a spacious country kitchen, formal living and dining area, evaporative cooling, reverse-cycle air conditioning, slow combustion wood fire, en-suite and wardrobes. Hardwood timber floors a feature.

Excellent water - Pudman Creek, bore, dams, water tank, reticulated trough system for stock water and an irrigation licence.

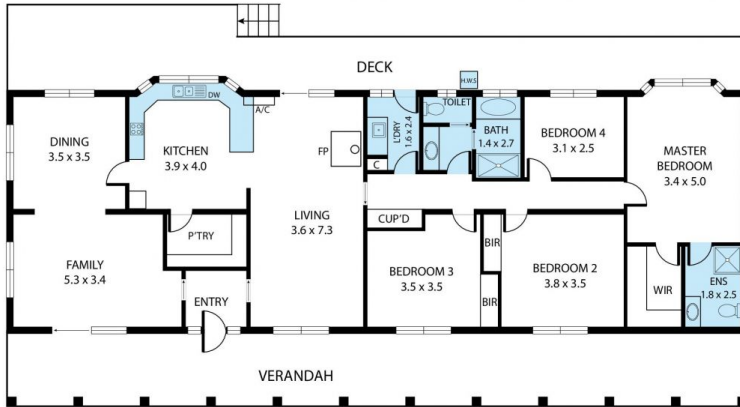
**Land Size** : 44 ha  
**View** : <https://www.flemingspropertyservices.com/sale/nsw/riverina/rye-park/residential/rural/6878815>



**Richard Fleming**  
02 6386 4083



**Justin Fleming**  
02 6385 3337



56 Banks Street Rye Park, NSW 2586

TOTAL APPROX. FLOOR AREA 165 SQ.M

Whilst every attempt has been made to ensure the accuracy of the floor plan contained here, measurements of doors, windows, rooms and any other items are approximate and no responsibility is taken for any error, omission, or misstatement. This plan is for illustrative purposes only and should be used as such by any prospective purchaser.

**Flemings**