

# Flemings



## 690 Burley Griffin Way Harden NSW

3  1  3 

Flemings Harden, are please to present to the market, 690 Burley Griffin Way, Harden NSW.

A three bedroom double brick home situated on approximately four and a half acres.

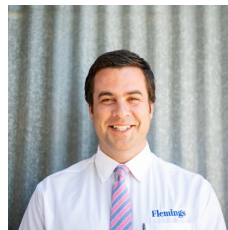
Three spacious bedrooms with high ceilings, main bedroom with built in robes. Modern bathroom with shower and toilet plus second toilet.

Neat kitchen with electric stove top/oven, ample storage - opening onto a formal dining area with open fireplace. Formal living area with s/c wood heater. Front and rear veranda.

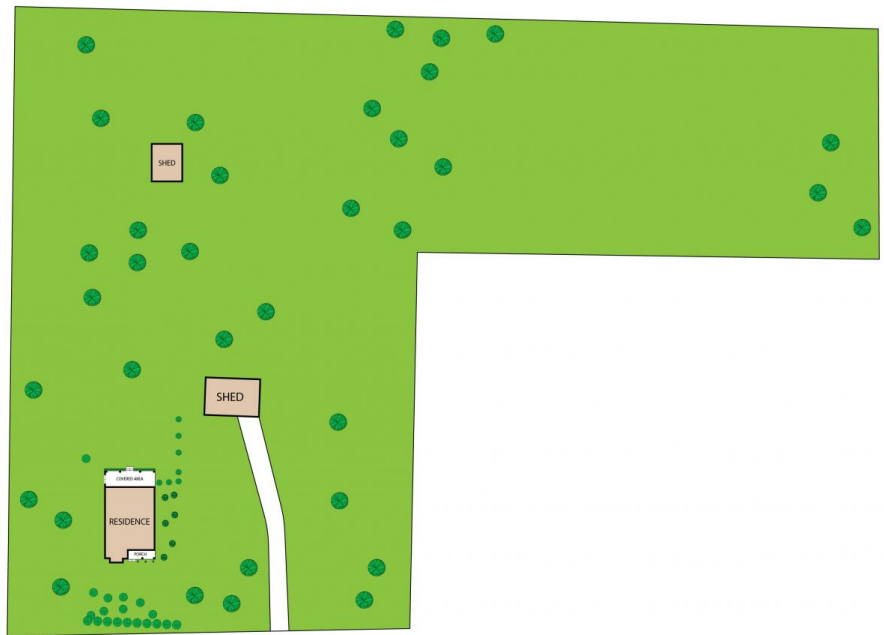
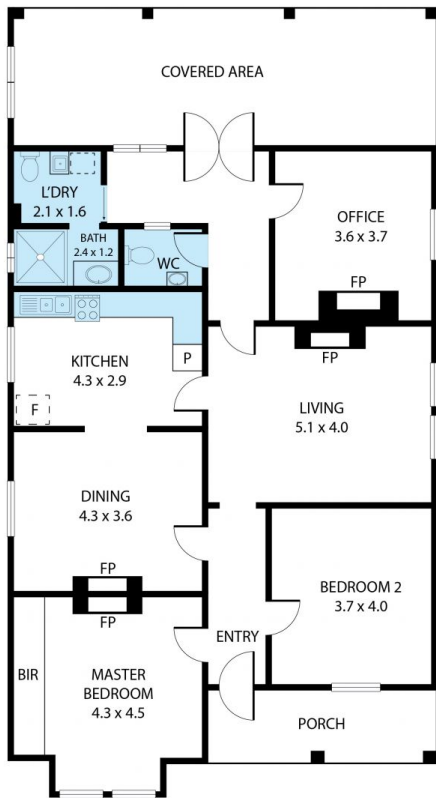
Also constructed on the property is the original Demondrille School. A beautiful old building with lots of character but in need of restoration to bring it back to its former glory.

**Land Size** : 4.5 Acres

**View** : <https://www.flemingspropertyservices.com/sale/nsw/riverina/harden/residential/house/6793034>



**Richard Fleming**  
02 6386 4083



690 Burley Griffin Way, Murrumburrah 2587

TOTAL APPROX. FLOOR AREA 129 SQ.M

Whilst every attempt has been made to ensure the accuracy of the floor plan contained here, measurements of doors, windows, rooms and any other items are approximate and no responsibility is taken for any error, omission, or misstatement. This plan is for illustrative purposes only and should be used as such by any prospective purchaser.

**Flemings**