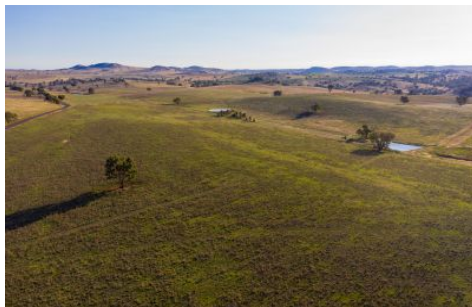
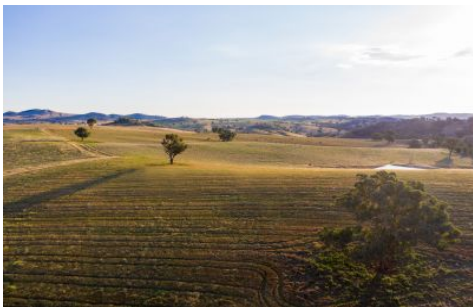


Flemings



825 Frogmore Road Road Frogmore NSW

5 2 4

'Wyora' 550 acres* situated in the South West Slopes on the edge of Frogmore Village in NSW.

The property features, fertile granite based soils, secure water from multiple sources. (dam, bore & creek) Undulating country with scattered timber.

Crop and pasture improvements include oats, phalaris grass, lucerne as well as native pastures.

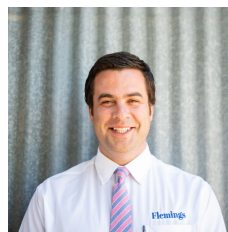
Average annual rainfall 612mls*

Carrying capacity is estimated to be 3.5DSE per acre

Fencing in good condition. Laneway system.

Original homestead with five bedrooms - main with

Land Size : 550 Acres
View : <https://www.flemingspropertyservices.com/sale/nsw/riverina/frogmore/residential/rural/6595949>



Richard Fleming
02 6386 4083



Justin Fleming
02 6385 3337

<https://www.flemingspropertyservices.com>

Wyora Bedroom

